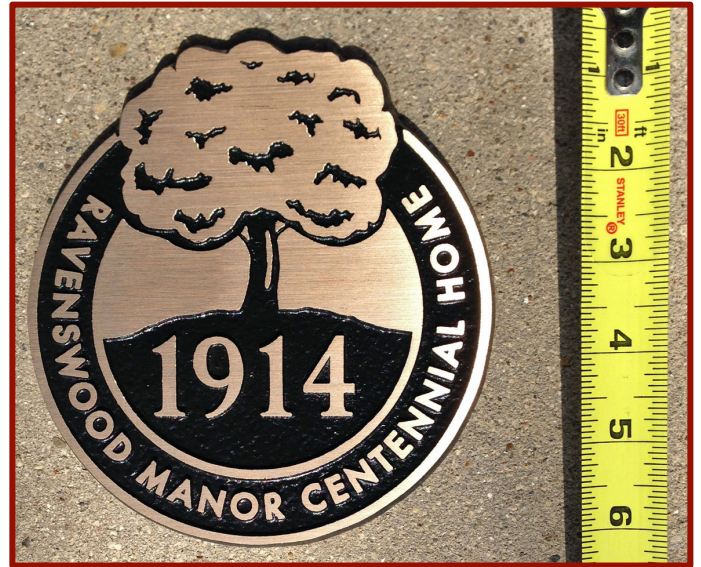


Centennial Homes plaque

Beautiful bronze plaque, at the best price, from a local foundry that specializes in historic markers

Centennial Homes plaque is solid bronze and will have the build year of your house. The photo shows the example with “1914,” but the foundry will make years 1909 through 1914 during this first year of the project.

The design is by Manor resident and graphic designer Steve Shanabruch. Ordering a plaque is your choice, and we hope that you will share in our neighborhood pride by displaying it on your house.



Mounting

- 1) **Select a location** for the plaque that is visible from the sidewalk. Our goal is for neighbors to be able to stroll the Manor and get a sense of the relative ages of our houses.
- 2) The plaque has two posts on the back that need to be sunk into two holes. **Drill two holes that are level and spaced apart to match the spacing of the posts.** Make sure that you take an extra moment to measure the post spacing and the drill holes spacing twice before drilling. Measure twice, drill once.
- 3) **Fill the drill holes with adhesive.** Any good, waterproof, adhesive that bounds to your wall material and the metal posts should work well. Consider Loctite PL Premium in a 10oz tube or Liquid Nails Small Projects in a 4oz resealable tube. Both adhesives are generally in stock at home improvement stores.
- 4) **Press the plaque and posts into the drill holes until the plaque is flush with the wall.** If the plaque moves a little, you can secure it in the position that you want with tape across the front of the plaque and onto the wall. Check the cure time on the adhesive to determine how long to leave the tape on.
- 5) **Congratulations, you are done.**