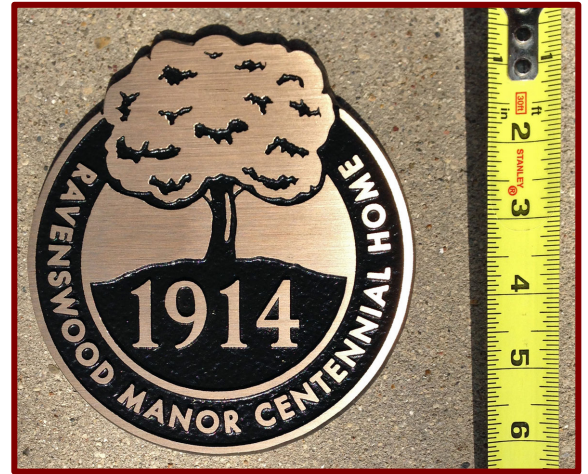


Centennial Homes Plaque

RMIA designed a beautiful bronze plaque, sourced a local foundry that specializes in historic markers, and got the best price for you.

Centennial Homes plaque is solid bronze and will have the build year of your house. The photo shows the example with “1914,” but the foundry will make your plaque with your build year. The design is by former Manor resident and graphic designer Steve Shanabruch.

Ordering a plaque is your choice, and we hope that you will share in our neighborhood pride by displaying it on your house.



Mounting

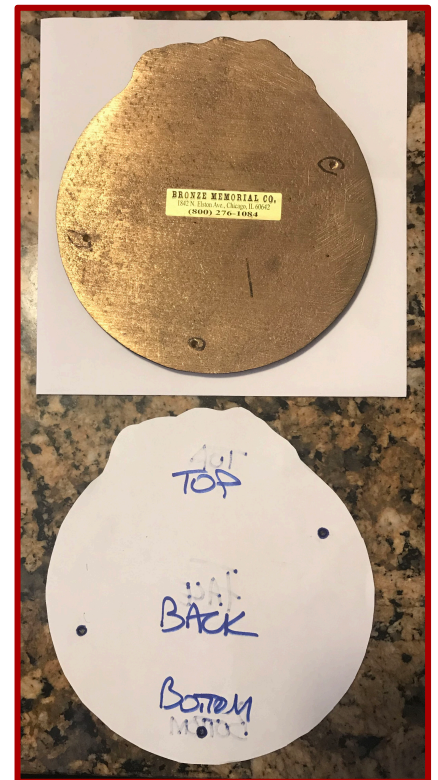
1) **Select a location** for the plaque that is visible from the sidewalk. Our goal is for neighbors to be able to stroll the Manor and get a sense of the relative ages of our houses.

2) The plaque has two or three posts on the back that need to be sunk into holes in the wall that you are mounting the plaque on. **Drill holes that match the spacing and depth of the posts.**

NB: Some homeowners have skipped the “posts” mounting method and just used adhesive to glue the plaque to the wall. For durability, and especially with uneven surfaces, we recommend using the posts.

One technique for marking the holes on the wall is to hold the plaque against the wall at the desired location with the posts in the back of the plaque. Mark the wall where the posts meet the wall.

Another good technique for marking the holes on the wall is to make a paper template. Place the plaque on a sheet of paper and trace the outline of the plaque onto the paper. Mark the paper template with top, bottom, face, and back. Cut along the outline. Place the plaque face down and align the paper template on the back of the plaque with the “face” side down. Feel for the post holes and punch holes in the paper where the holes are. Now you are ready to mark the holes on the wall. Tape the paper template on the wall with the “face” side up, and make sure that it is in the spot that you want. Mark the holes for drilling. For masonry walls, you should use a masonry drill bit.



3) **Fill the drill holes with adhesive.** Any good, waterproof, weather-resistant, adhesive that binds to your wall material and the metal posts should work well. Consider Loctite PL Premium or Liquid Nails Small Projects. Both come in 4oz resealable tubes and are generally in stock at hardware and home improvement stores.

4) **Press the plaque and posts into the drill holes until the plaque is flush with the wall.** If the plaque moves a little, you can secure it with tape across the front of the plaque and onto the wall. Check the cure time on the adhesive to determine how long to leave the tape on.

5) **Congratulations, you are done.**